

PRODUCT CODE:
SSMIX

THORZT
HYDRATING HARD WORK

HIGH ELECTROLYTE LOW SUGAR HYDRATION SHOT MAX POWDERS

ALL NATURAL COLOURS, ALL NATURAL FLAVOURS, ALL NATURAL SWEETENERS

DESCRIPTION

THORZT IS NOT ONLY A GREAT TASTING DRINK, BUT IT IS ALSO SCIENTIFICALLY FORMULATED WITH ELECTROLYTES FOR RAPID RE-HYDRATION. DESIGNED WITH 3 X MORE ELECTROLYTES (THAN OUR STANDARD HYDRATION SHOTS), LOW SUGAR, ALL NATURAL FLAVOURS, COLOURS AND SWEETENERS AS AN ORAL REHYDRATION SOLUTION

Few people recognise that hard work on the job site can be equally as exhausting as on the sporting field. Extreme weather and high energy can leave even the toughest of us dehydrated. Engineered off the World Health Organisation's hydration formula to quickly rehydrate you and have you performing at your best for longer.

FEATURES & BENEFITS

- 3 x more electrolytes than our standard Hydration Shots
- Low amount of Sugar
- All natural Flavours, Colours and Sweeteners
- Proprietary electrolyte formula inc. Sodium, Potassium and Magnesium
- Available in 3 delicious flavours:
 - Wild Berry
 - Orange
 - Grape

SERVING

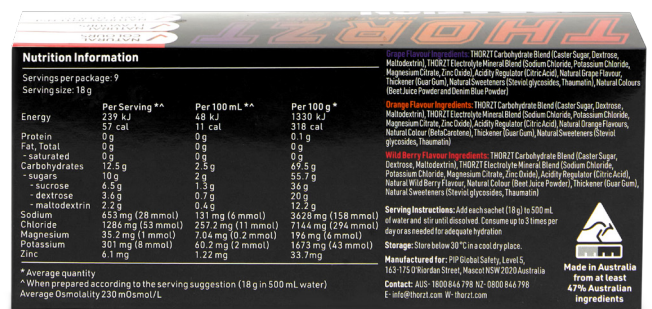
*When prepared according to the serving suggestion. Add each sachet (18 g) to 500 mL of water. Simply add sachet to a drink bottle for the perfect mix. Stir until dissolved.

APPLICATIONS

- Outdoor / indoor work
- Heavy physical activity
- Sports

PRODUCT DETAILS

Pack Qty: 9 x 18g/500ml sachets per pack
Ctn Qty : 12 x packs of 9 x 18g/500ml sachet



SSMIX

Nutrition Information

Servings per package: 9
Serving size: 18 g

	Per Serving **	Per 100 mL **	Per 100 g *
Energy	239 kJ 57 cal	48 kJ 11 cal	1330 kJ 318 cal
Protein	0 g	0 g	0.1 g
Fat, Total	0 g	0 g	0 g
- saturated	0 g	0 g	0 g
Carbohydrates	12.5 g	2.5 g	69.5 g
- sugars	10 g	2 g	55.7 g
- sucrose	6.5 g	1.3 g	36 g
- dextrose	3.6 g	0.7 g	20 g
- maltodextrin	2.2 g	0.4 g	12.2 g
Sodium	653 mg (28 mmol)	131 mg (6 mmol)	3628 mg (158 mmol)
Chloride	1286 mg (53 mmol)	257.2 mg (11 mmol)	7144 mg (294 mmol)
Magnesium	35.2 mg (1 mmol)	7.04 mg (0.2 mmol)	196 mg (6 mmol)
Potassium	301 mg (8 mmol)	60.2 mg (2 mmol)	1673 mg (43 mmol)
Zinc	6.1 mg	1.22 mg	33.7 mg

* Average quantity

^ When prepared according to the serving suggestion (18 g in 500 mL water)
Average Osmolality 230 mOsmol/L

THORZT AUSTRALIA
LEVEL 5, 163-175 O'RIORDAN STREET,
MASCOT NSW 2020 AUSTRALIA
TECH SUPPORT: 1800 846 798
CUSTOMER SERVICE: 1800 846 798
EMAIL: INFO@THORZT.COM

THORZT NEW ZEALAND
69 MCLAUGHLINS ROAD, WIRI,
AUCKLAND 2104 NEW ZEALAND
TECH SUPPORT: 0800 888 778
CUSTOMER SERVICE: 0800 888 778
EMAIL: INFO@THORZT.COM

THORZT
HYDRATING HARD WORK

PIP AUSTRALIA AND NEW ZEALAND
THORZT.COM | PIPANZ.COM